



ISO 9001 國際品質認證
ISO 9001 CERTIFICATE

松 暉 電 機 工 業 股 份 有 限 公 司
SONG HUEI ELECTRIC CO., LTD.
佛 山 市 松 暉 電 機 科 技 有 限 公 司
FOSHAN SONG HUEI ELECTRIC CO., LTD.

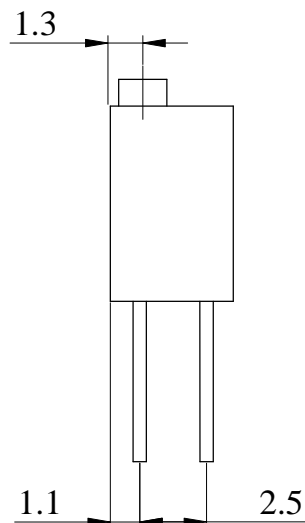
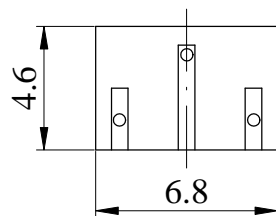
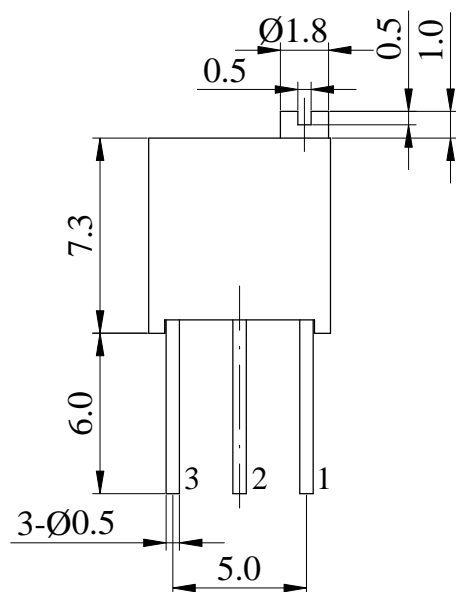
電氣特性 Electrical Characteristics												
總阻值 (R) Total resistance	10 Ω ~ 1 MΩ											
總阻值容許誤差 Total resistance tolerance	± 10 %											
阻值線性 Resistance taper	B											
摺動雜音 Sliding noise	Less than 150 mV											
殘留阻值 Residual resistance	R < 1 KΩ: Less than 10 Ω R ≥ 1 KΩ: Less than 1 % of total resistance value											
定格電力 Rated power (W)	0.25 W / 70 °C ; 0 W / 125 °C											
環境溫度範圍 Temperature range	<div><div>-55 °C ~ 125 °C</div><div><div>Rated power %</div><div><table border="1"><caption>Rated power % vs. Ambient temperature (°C)</caption><thead><tr><th>Ambient temperature (°C)</th><th>Rated power %</th></tr></thead><tbody><tr><td>-55</td><td>100</td></tr><tr><td>0</td><td>100</td></tr><tr><td>70</td><td>100</td></tr><tr><td>125</td><td>0</td></tr></tbody></table></div></div></div>		Ambient temperature (°C)	Rated power %	-55	100	0	100	70	100	125	0
Ambient temperature (°C)	Rated power %											
-55	100											
0	100											
70	100											
125	0											
額定電壓 Rated voltage (V)	<div><div>$E = \sqrt{P * R}$</div><div>E: Rated voltage 額定電壓 (V) P: Power rating 額定電力 (W) R: Nominal total resistance 公稱全阻抗值 (Ω)</div><div>當額定電壓超過最高使用電壓的時候，最高使用電壓即為額定電壓。 When the rated voltage exceeds the maximum operating voltage,the maximum operating voltage shall be the rated voltage.</div></div>											
最高使用電壓 Max operating voltage	AC 300 V											
絕緣阻抗 Insulation resistance	More than 100 MΩ at DC 500 V											
回轉圈數 Effective travel	12 T ± 2 T cycles											
電阻溫度係數 Resistance temperature coefficient	100 ppm / °C											
耐電壓 Withstand voltage	1 minute at AC 600 V											
機械特性 Mechanical Characteristics												
項目 Item	測試條件 Test Conditions	規格 Performance										
操作力矩 Rotational torque	-55 °C ~ 125 °C	30 ~ 200 gf.cm										
端子強度 Strength of terminals	於端子尖端各方向施加 100 gf (1 N) 之力，保持 1 秒鐘。 When 100 gf (1 N) are weighted on top of terminal in every direction for 1 seconds.	無端子鬆動損壞，端子基板破裂等。 Loose stable of terminal and damage on stator board should not exist.										
焊接性能 Solder ability	焊接溫度：240 ± 5 °C Soldering temperature: 240 ± 5 °C 浸漬時間：3 ± 0.5 seconds Dipping time: 3 ± 0.5 seconds	除切割面外，75 % 以上浸焊部位被焊料覆蓋。 More than 75 % of the dipping part shall be covered by solder, excluding the cutting surface.										
耐焊接 Soldering heat test	260 °C 3 ± 1 seconds	無端子鬆動損壞，端子基板破裂等。 Loose stable of terminal and damage on stator board should not exist.										



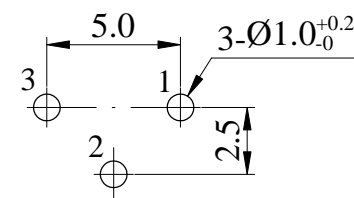
ISO 9001 國際品質認證
ISO 9001 CERTIFICATE

松 暉 電 機 工 業 股 份 有 限 公 司
SONG HUEI ELECTRIC CO., LTD.
佛 山 市 松 暉 電 機 科 技 有 限 公 司
FOSHAN SONG HUEI ELECTRIC CO., LTD.

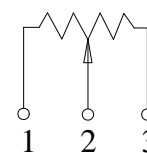
耐候性 Weather Performance		
項目 Item	測試條件 Test Conditions	規格 Performance
耐濕度 Humidity test	置於溫度 $40 \pm 2^{\circ}\text{C}$ ，溼度 90 ~ 95 % RH，500 小時後，放於正常環境下 1 小時，然後 1 小時內測試。 Testing switch being kept in the conditions at $40 \pm 2^{\circ}\text{C}$ and 90 ~ 95 % RH for 500 hours in a normal ambient condition for 1 hour. then to be measured within 1 hour.	絕緣電阻在 10 MΩ 以上，DC 500 V，耐壓 AC 600 V 持續 1 分鐘，操作力矩變化在 $\pm 30\%$ 之內，各部位無損壞，無機械性能異常。電阻變化 $\pm 10\%$ 以內。 Insulation resistance is more than 10 MΩ under DC 500 V, and also withstand voltage AC 600 V for 1 minute. The operating torque shall be within $\pm 30\%$ of initial value, and every parts should not defected in appearance and mechanical performance. The resistance change shall be within $\pm 10\%$.
耐熱性 Heat test	置於溫度 $125 \pm 2^{\circ}\text{C}$ ，500 小時後，放於正常環境下 1 小時，然後 1 小時內測試。 Testing switch being kept in the conditions at $125 \pm 2^{\circ}\text{C}$ for 500 hours and then in a normal ambient condition for 1 hour. Then to be measured within 1 hour.	
低溫特性 Cold test	置於溫度 $-55 \pm 2^{\circ}\text{C}$ ，500 小時後，放於正常環境下 1 小時，然後 1 小時內測試。 Testing switch being kept in the conditions at $-55 \pm 2^{\circ}\text{C}$ for 500 hours and then in a normal ambient condition for 1 hour. then to be measured within 1 hour.	
耐久性 Durability		
項目 Item	測試條件 Test Conditions	規格 Performance
壽命 (無負荷) Life test (Without load)	無負荷狀態連續測試，速度為 6 ~ 10 回 / 分，總次數 200 次。 200 cycles of operation shall be performed continuously at the rate of 6 ~ 10 cycles / minute without load.	絕緣電阻在 10 MΩ 以上，DC 500 V，耐壓 AC 600 V 持續 1分鐘，操作力矩變化在 $\pm 30\%$ 之內，各部位無損壞，無機械性能異常。 Insulation resistance is more than 10 MΩ under DC 500 V, and also withstand voltage AC 600 V for 1 minute. The operating torque shall be within $\pm 30\%$ of initial value, and every parts should not defected in appearance and mechanical performance.



Mounting Hole



CIRCUIT



Non notation tolerance	
< 10	±0.3
10 ~ 100	±0.5
> 100	±0.8



SONG HUEI ELECTRIC CO., LTD.
FOSHAN SONG HUEI ELECTRIC CO., LTD.

MODEL: 3266W/0184

Approval



Checked



Projected



UNIT

mm

SCALE

3:1

VERSION

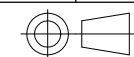
1.2

DATE

2012.08.23

DRAWING
NO.

3362-010



ISSUE

整理图元

增加0184

SUBJECT

何鴻根

何鴻根

NAME

2018. 12. 18

2017. 12. 11

DATE

RECORD