



ISO 9001 國際品質認證
ISO 9001 CERTIFICATE

松 暉 電 機 工 業 股 份 有 限 公 司
SONG HUEI ELECTRIC CO., LTD.
佛 山 市 松 暉 電 機 科 技 有 限 公 司
FOSHAN SONG HUEI ELECTRIC CO., LTD.

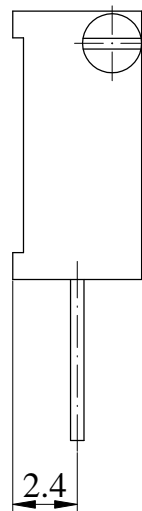
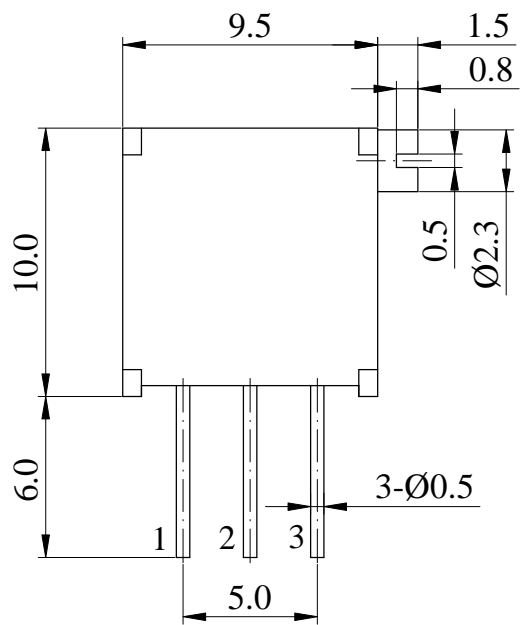
電氣特性 Electrical Characteristics																		
總阻值 (R) Total resistance	10 Ω ~ 1 MΩ																	
總阻值容許誤差 Total resistance tolerance	± 10 %																	
阻值線性 Resistance taper	B																	
摺動雜音 Sliding noise	Less than 150 mV																	
殘留阻值 Residual resistance	R < 1 KΩ: Less than 10 Ω R ≥ 1 KΩ: Less than 1 % of total resistance value																	
定格電力 Rated power (W)	0.5 W / 70 °C ; 0 W / 125 °C																	
環境溫度範圍 Temperature range	<div><div>-55°C ~ 125°C</div><div><div>Rated power %</div><div><table border="1"><caption>Rated power % vs. Ambient temperature (°C)</caption><thead><tr><th>Ambient temperature (°C)</th><th>Rated power %</th></tr></thead><tbody><tr><td>-55</td><td>100</td></tr><tr><td>0</td><td>100</td></tr><tr><td>70</td><td>100</td></tr><tr><td>80</td><td>90</td></tr><tr><td>100</td><td>66.7</td></tr><tr><td>120</td><td>33.3</td></tr><tr><td>125</td><td>0</td></tr></tbody></table></div></div></div>		Ambient temperature (°C)	Rated power %	-55	100	0	100	70	100	80	90	100	66.7	120	33.3	125	0
Ambient temperature (°C)	Rated power %																	
-55	100																	
0	100																	
70	100																	
80	90																	
100	66.7																	
120	33.3																	
125	0																	
額定電壓 Rated voltage (V)	$E=\sqrt{P * R}$ E: Rated voltage 額定電壓 (V) P: Power rating 額定電力 (W) R: Nominal total resistance 公稱全阻抗值 (Ω) 當額定電壓超過最高使用電壓的時候，最高使用電壓即為額定電壓。 When the rated voltage exceeds the maximum operating voltage,the maximum operating voltage shall be the rated voltage.																	
最高使用電壓 Max operating voltage	AC 300 V																	
絕緣阻抗 Insulation resistance	More than 100 MΩ at DC 500 V																	
回轉圈數 Effetive travel	28 T ± 2 T cycles																	
電阻溫度係數 Resistance temperature coefficient	250 ppm / °C																	
耐電壓 Withstand voltage	1 minute at AC 600 V																	
機械特性 Mechanical Characteristics																		
項目 Item	測試條件 Test Conditions	規格 Performance																
操作力矩 Rotational torque	-55 °C ~ 125 °C	30 ~ 200 gf.cm																
端子強度 Strength of terminals	於端子尖端各方向施加 500 gf (5 N) 之力，保持 1 秒鐘。 When 500 gf (5 N) are weighted on top of terminal in every direction for 1 seconds.	無端子鬆動損壞，端子基板破裂等。 Loose stable of terminal and damage on stator board should not exist.																
焊接性能 Solder ability	焊接溫度：240 ± 5 °C Soldering temperature: 240 ± 5 °C 浸漬時間：3 ± 0.5 seconds Dipping time: 3 ± 0.5 seconds	除切割面外，75 % 以上浸焊部位被焊料覆蓋。 More than 75 % of the dipping part shall be covered by solder, excluding the cutting surface.																
耐焊接 Soldering heat test	260 °C ± 5 °C for DIP soldering in 3 seconds 350 °C ± 5 °C for manual soldering in 3 seconds	無端子鬆動損壞，端子基板破裂等。 Loose stable of terminal and damage on stator board should not exist.																



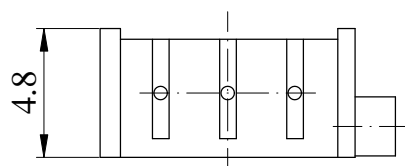
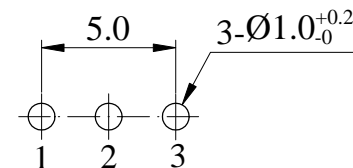
ISO 9001 國際品質認證
ISO 9001 CERTIFICATE

松 暉 電 機 工 業 股 份 有 限 公 司
SONG HUEI ELECTRIC CO., LTD.
佛 山 市 松 暉 電 機 科 技 有 限 公 司
FOSHAN SONG HUEI ELECTRIC CO., LTD.

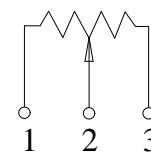
耐候性 Weather Performance		
項目 Item	測試條件 Test Conditions	規格 Performance
耐濕度 Humidity test	置於溫度 40 ± 2 °C，溼度 90 ~ 95 % RH，500 小時後，放於正常環境下 1 小時，然後 1 小時內測試。 Testing switch being kept in the conditions at 40 ± 2 °C and 90 ~ 95 % RH for 500 hours in a normal ambient condition for 1 hour. then to be measured within 1 hour.	絕緣電阻在 10 MΩ 以上，DC 500 V，耐壓 AC 600 V 持續 1 分鐘，操作力矩變化在 ± 30 % 之內，各部位無損壞，無機械性能異常。電阻變化 ± 10 % 以內。 Insulation resistance is more than 10 MΩ under DC 500 V, and also withstand voltage AC 600 V for 1 minute. The operating torque shall be within ± 30 % of initial value, and every parts should not defected in appearance and mechanical performance. The resistance change shall be within ± 10 %.
耐熱性 Heat test	置於溫度 125 ± 2 °C，500 小時後，放於正常環境下 1 小時，然後 1 小時內測試。 Testing switch being kept in the conditions at 125 ± 2 °C for 500 hours and then in a normal ambient condition for 1 hour. Then to be measured within 1 hour.	
低溫特性 Cold test	置於溫度 -55 ± 2 °C，500 小時後，放於正常環境下 1 小時，然後 1 小時內測試。 Testing switch being kept in the conditions at -55 ± 2 °C for 500 hours and then in a normal ambient condition for 1 hour. then to be measured within 1 hour.	
耐久性 Durability		
項目 Item	測試條件 Test Conditions	規格 Performance
壽命 (無負荷) Life test (Without load)	無負荷狀態連續測試，速度為 6 ~ 10 回 / 分，總次數 200 次。 200 cycles of operation shall be performed continuously at the rate of 6 ~ 10 cycles / minute without load.	絕緣電阻在 10 MΩ 以上，DC 500 V，耐壓 AC 600 V 持續 1 分鐘，操作力矩變化在 ± 30 % 之內，各部位無損壞，無機械性能異常。 Insulation resistance is more than 10 MΩ under DC 500 V , and also withstand voltage AC 600 V for 1 minute. The operating torque shall be within ± 30 % of initial value, and every parts should not defected in appearance and mechanical performance.



Mounting Hole



CIRCUIT



Non notation tolerance	
< 10	±0.3
10 ~ 100	±0.5
> 100	±0.8



SONG HUEI ELECTRIC CO., LTD.
FOSHAN SONG HUEI ELECTRIC CO., LTD.

MODEL: 3296X/0286

④

③

②

①

图元整理

何鸿根

2018. 12. 18

ISSUE

SUBJECT

NAME

DATE

RECORD

Approval



Checked



Projected



UNIT

mm

SCALE

3:1

VERSION

1.1

DATE

2013.04.23

DRAWING NO.

3362-020

