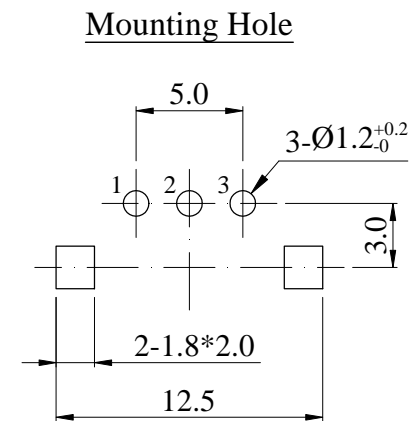
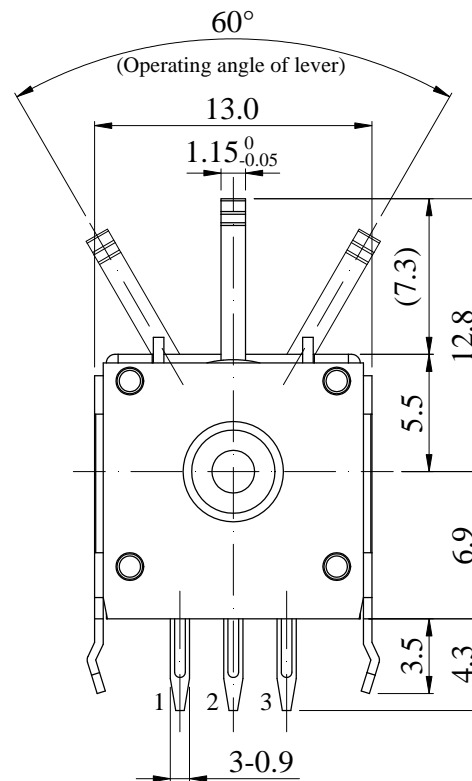
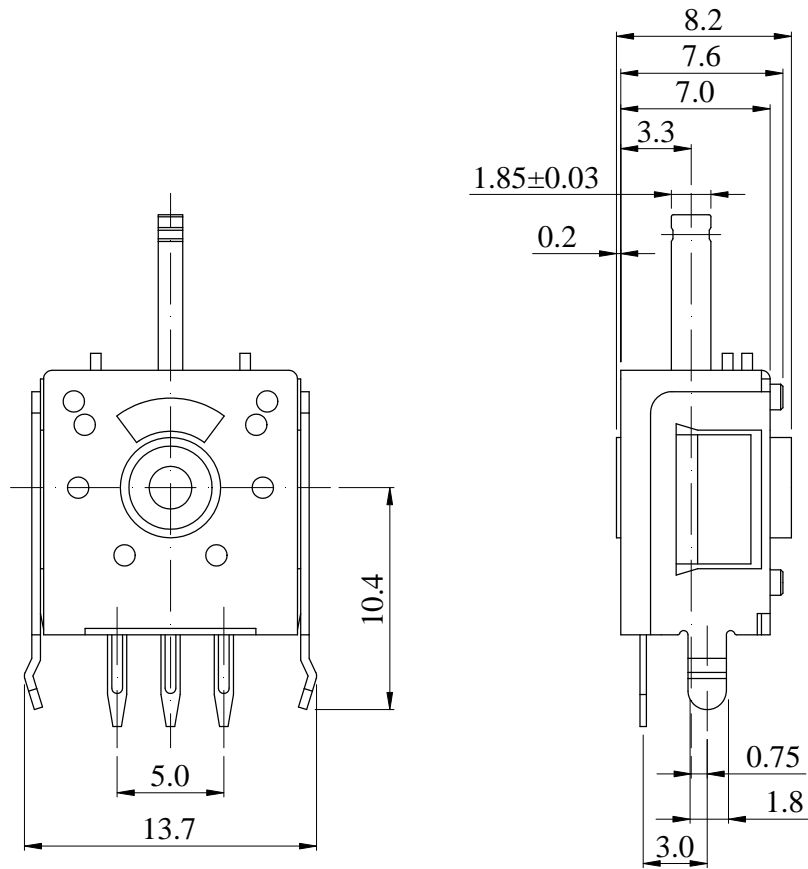




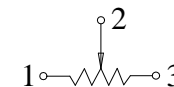
ISO 9001 國際品質認證
ISO 9001 CERTIFICATE

松暉電機工業股份有限公司
SONG HUEI ELECTRIC CO., LTD.
佛山市松暉電機科技有限公司
FOSHAN SONG HUEI ELECTRIC CO., LTD.

一般事項 General	
使用溫度範圍 Operating temperature	-10 °C ~ +70 °C
儲存溫度 Storage temperature range	-30 °C ~ +80 °C
手工焊接 Manual soldering	300 °C max 3 sec
電氣特性 Electrical Characteristics	
總阻值 (R) Total resistance	5 KΩ
總阻值容許誤差 Total resistance tolerance	± 10 %
阻值線性 Resistance taper	B
電氣有效角度 Angle of Effective electrical	50° ± 5°
中心銀層角度 Central silver layer angle	10° ± 2°
中分誤差值 Voltage divider error	44%~56%
摺動雜音 Sliding noise	Less than 300 mV
殘留阻值 Residual resistance	Less than 20 Ω
定格電力 Rated power (W)	0.05 W
額定電壓 Rated voltage (V)	$E = \sqrt{P * R}$ E: Rated voltage 額定電壓 (V) P: Power rating 額定電力 (W) R: Nominal total resistance 公稱全阻抗值 (Ω) 當額定電壓超過最高使用電壓的時候，最高使用電壓即為額定電壓。 When the rated voltage exceeds the maximum operating voltage, the maximum operating voltage shall be the rated voltage.
最高使用電壓 Max operating voltage	AC 250 V DC 12 V
機械特性 Mechanical Characteristics	
止強度 Stopper strength	3 Kgf.cm max
作動力 Operating force	150 ~ 300 gf.cm
運轉角度 Operating angle of lever	60 ° ± 10°
工作壽命 Operating life	100,000 cycles



CIRCUIT



Non notation tolerance	
< 10	±0.3
10 ~ 100	±0.5
> 100	±0.8



SONG HUEI ELECTRIC CO., LTD.
FOSHAN SONG HUEI ELECTRIC CO., LTD.

MODEL: J12N/0506

Approval



Checked



Projected



UNIT	mm	SCALE	3:1
VERSION	1.1	DATE	2018.08.14
DRAWING NO.	SS-088		

④			
③			
②			
①	图元整理	何鸿根	2018.12.26
ISSUE	SUBJECT	NAME	DATE

RECORD