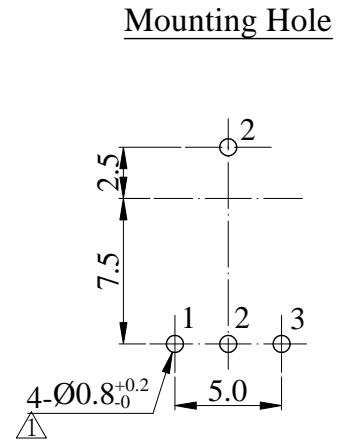
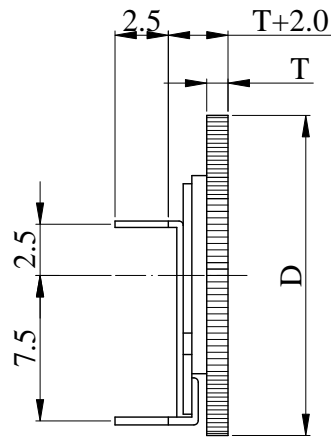
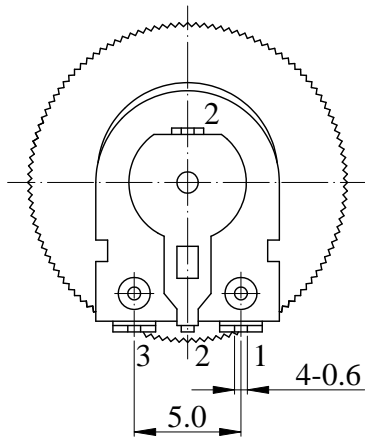




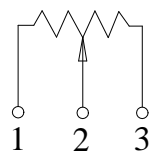
ISO 9001 國際品質認證  
ISO 9001 CERTIFICATE

松暉電機工業股份有限公司  
SONG HUEI ELECTRIC CO., LTD.  
佛山市松暉電機科技有限公司  
FOSHAN SONG HUEI ELECTRIC CO., LTD.

一般事項 General	
使用溫度範圍 Operating temperature	-10 °C ~ +70 °C
手工焊接 Manual soldering	300 °C max 3 sec
電氣特性 Electrical Characteristics	
總阻值 (R) Total resistance	Taper A: 5 K ~ 500 K ; Taper B: 500 Ω ~ 1 MΩ
總阻值容許誤差 Total resistance tolerance	± 20 % (Less than 500 Ω and More than 1 MΩ ± 30 %)
阻值線性 Resistance taper	<input type="checkbox"/> A <input type="checkbox"/> B
摺動雜音 Sliding noise	Less than 70 mV
殘留阻值 Residual resistance	Less than 20 Ω
定格電力 Rated power (W)	0.05 W
額定電壓 Rated voltage (V)	$E = \sqrt{P * R}$ E: Rated voltage 額定電壓 (V) P: Power rating 額定電力 (W) R: Nominal total resistance 公稱全阻抗值 (Ω) 當額定電壓超過最高使用電壓的時候，最高使用電壓即為額定電壓。 When the rated voltage exceeds the maximum operating voltage, the maximum operating voltage shall be the rated voltage.
最高使用電壓 Max operating voltage	DC 30 V
絕緣阻抗 Insulation resistance	More than 100 MΩ at DC 100 V
耐電壓 Withstand voltage	1 minute at AC 100 V
機械特性 Mechanical Characteristics	
全回轉角度 Total rotational angle	220 ° ± 5 °
全回扭力 Rotational torque	10 ~ 150 gf.cm
全回轉止強度 Rotational stopper strength	1 Kgf.cm max
軸推拉強度 Shaft push-pull strength	Push force: 0.5 Kgf max Pull force: 0.2 Kgf max
回轉壽命 Rotational life	10,000 cycles



CIRCUIT



						Non notation tolerance	
D=	Ø10	Ø12	Ø15	Ø16	Ø20	< 10	±0.3
T=	1.8	1.9	0.9	1.9	3.0	10 ~ 100	±0.5
choose						> 100	±0.8



SONG HUEI ELECTRIC CO., LTD.  
FOSHAN SONG HUEI ELECTRIC CO., LTD.

MODEL: R09N

Approval



Checked



Projected



UNIT

mm

SCALE

4:1

VERSION

1.2

DATE

2010.10.26

DRAWING NO.

R09N-026



整理图元

增加公差<sup>+0.2</sup><sub>-0</sub>

ISSUE

SUBJECT

何鴻根

邝俊华

NAME

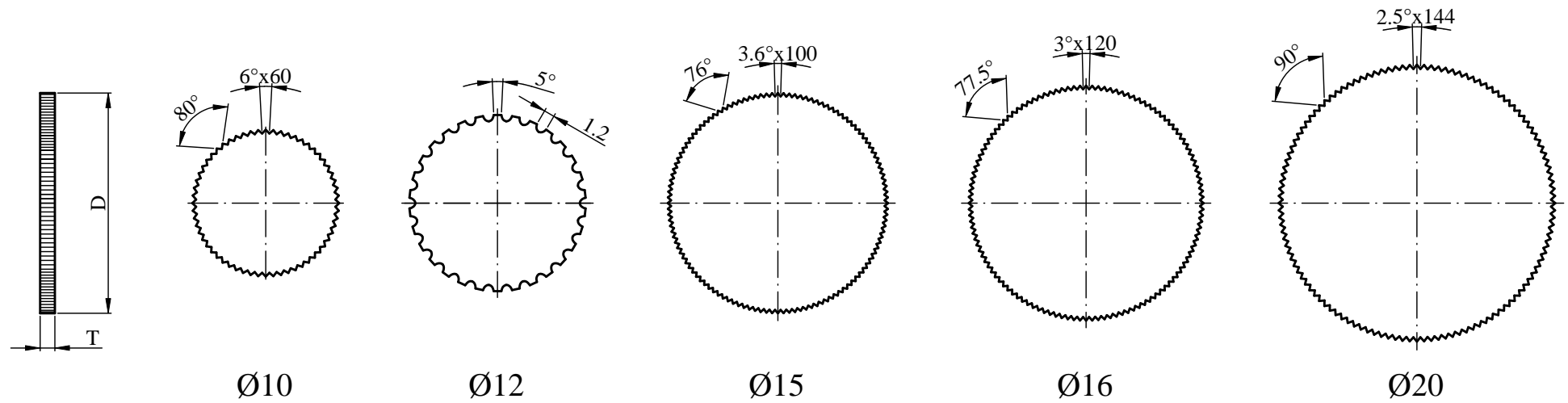
2018. 12. 19

2015-12-09

DATE

RECORD

# Type of Knob 旋鈕型式:



Outside Diameter(D)	Ø10	Ø12	Ø15	Ø16	Ø20
Thickness(T)	1.8	1.9	0.9	1.9	3.0