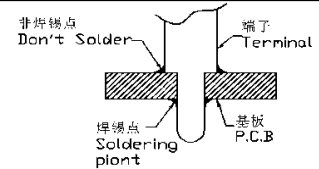


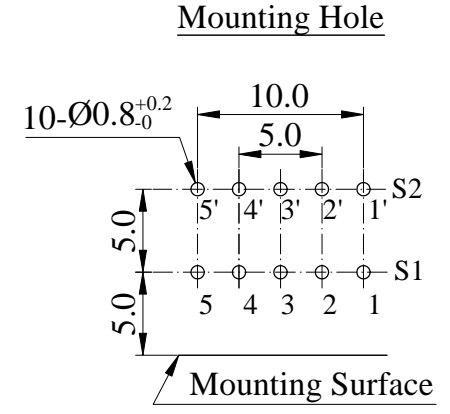
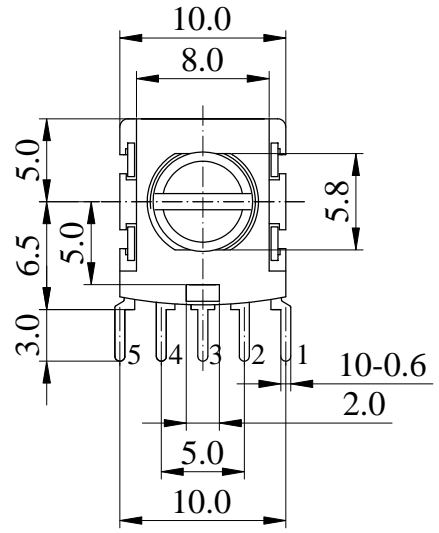
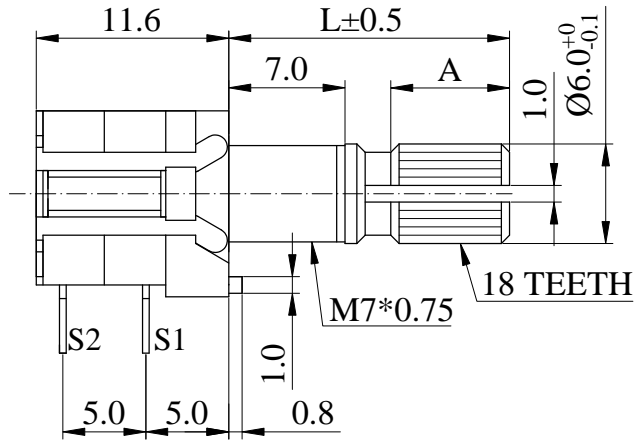


ISO 9001 國際品質認證  
ISO 9001 CERTIFICATE

松暉電機工業股份有限公司  
SONG HUEI ELECTRIC CO., LTD.  
佛山市松暉電機科技有限公司  
FOSHAN SONG HUEI ELECTRIC CO., LTD.

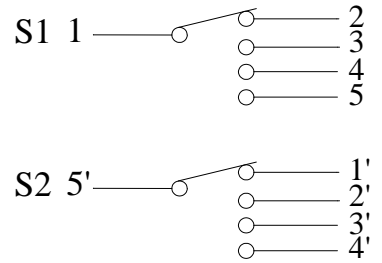
一般事項 General	
使用溫度範圍 Operating temperature	-10 °C ~ +70 °C
儲存溫度 Storage temperature	-20 °C ~ +80 °C
電氣特性 Electrical Characteristics	
接觸電阻 Contact resistance	Less than 50 mΩ
額定值 Rating	DC 16 V 0.1 A
絕緣阻抗 Insulation resistance	More than 100 MΩ at DC 100 V
耐電壓 Withstand voltage	1 minute at AC 100 V
轉換時間 Changeover timing	Non-shorting
機械特性 Mechanical Characteristics	
每段角度 Step angle	30 ° ± 3 °
旋轉力矩 Rotational torque	200 ~ 600 gf.cm
端子強度 Terminal strength	400 gf.cm
止檔強度 Shaft stop strength	5 Kgf.cm max
軸推拉強度 Shaft push-pull strength	8 Kgf max
回轉壽命 Rotational life	10,000 cycles ( Contact resistance : ≤ 100 mΩ )
焊錫耐熱性 Soldering heat characteristic	Auto Soldering: 260 °C ± 5 °C Time: ≅ 5 sec Manual Soldering: 350 °C ± 5 °C Time: 3 ± 1 sec





SHAFT SHOWN IN FULL C.C.W POSITION

CIRCUIT



Non notation tolerance					
L=	15	20	25	< 10	±0.3
A=	6	10	12	10 ~ 100	±0.5
choose				> 100	±0.8

**S**® SONG HUEI ELECTRIC CO., LTD.  
FOSHAN SONG HUEI ELECTRIC CO., LTD.

MODEL: RBP10-1-2-4(KC)/LAL/0425

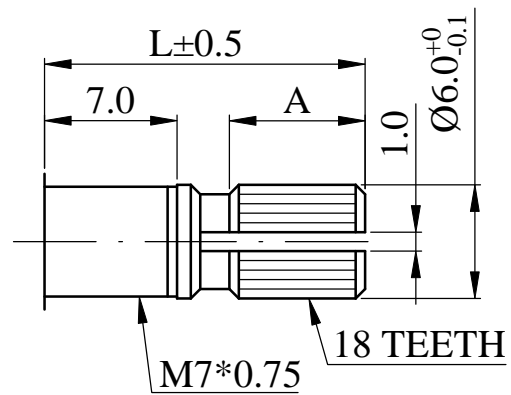
Approval		Checked		Projected		UNIT	mm	SCALE	3:1
						VERSION	1.2	DATE	2013.11.06
						DRAWING NO.	RBP10-001		

④			
③			
②	整理图元	何鸿根	2019.01.07
①	增加0425	何鸿根	2017.4.10
ISSUE	SUBJECT	NAME	DATE

RECORD

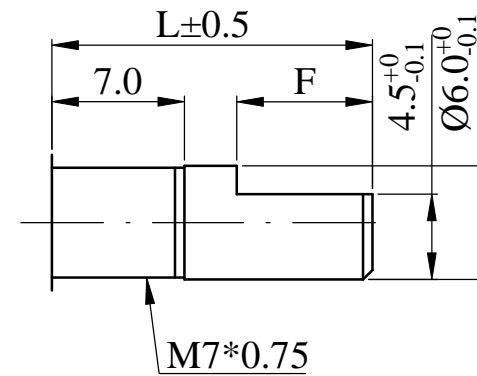
# Shaft Types 軸型:

## KC Type:



L=	15	20
A=	6	10

## F Type:



L=	15	20
F=	7	10