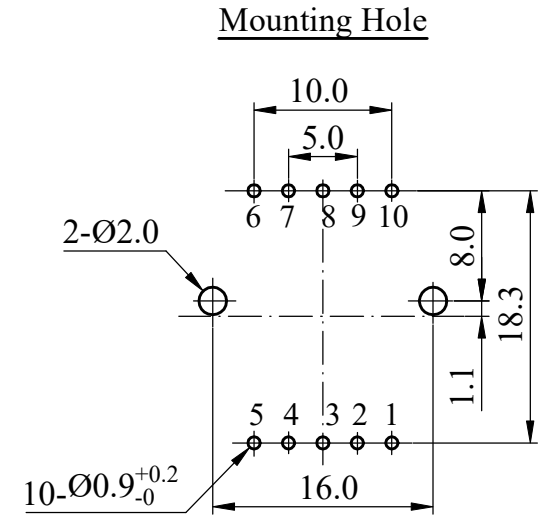
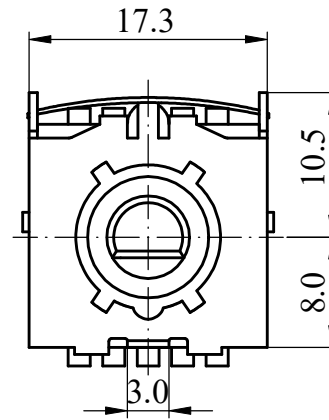
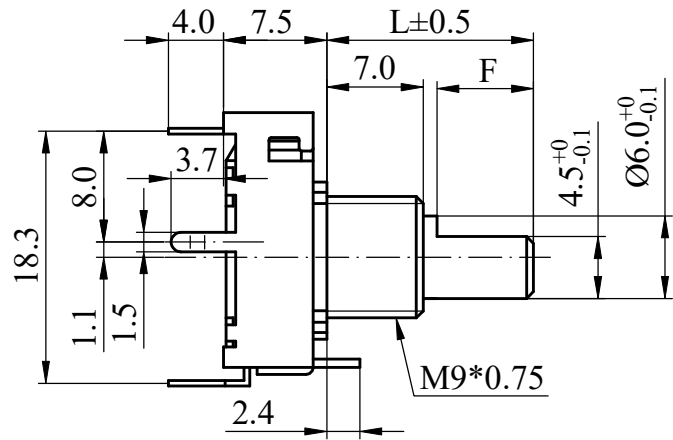




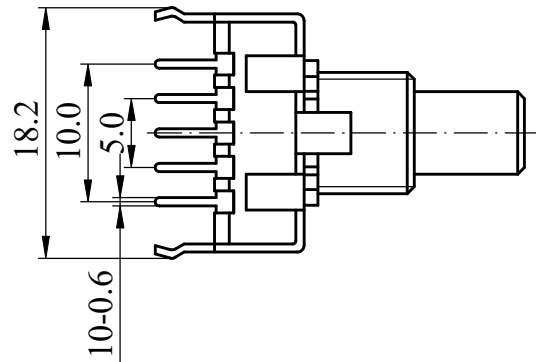
ISO 9001 國際品質認證
ISO 9001 CERTIFICATE

松暉電機工業股份有限公司
SONG HUEI ELECTRIC CO., LTD.
佛山市松暉電機科技有限公司
FOSHAN SONG HUEI ELECTRIC CO., LTD.

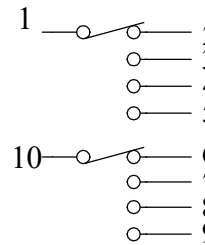
一般事項 General	
使用溫度範圍 Operating temperature	-10 °C ~ +70 °C
儲存溫度 Storage temperature	-20 °C ~ +80 °C
手工焊接 Manual soldering	350 ± 5 °C 3 ± 1 sec
電氣特性 Electrical Characteristics	
接觸電阻 Contact resistance	Less than 50 mΩ
額定值 Rating	DC 16 V 0.1 A
絕緣阻抗 Insulation resistance	More than 100 MΩ at DC 100 V
耐電壓 Withstand voltage	1 minute at AC 100 V
機械特性 Mechanical Characteristics	
每段角度 Step angle	30 ° (one-step operating angle)
轉換時間 Changeover timing	Non-shorting
旋轉力矩 Rotational torque	200 ~ 600 gf.cm
止檔強度 Shaft stop strength	5 Kgf.cm max
軸推拉強度 Shaft push-pull strength	8 Kgf max
回轉壽命 Rotational life	10,000 cycles (Contact resistance: ≤ 200 mΩ)



SHAFT SHOWN IN FULL C.C.W POSITION



CIRCUIT



				Non notation tolerance	
L=	15	20	25	< 10	±0.3
F=	7	12	12	10 ~ 100	±0.5
choose				> 100	±0.8



SONG HUEI ELECTRIC CO., LTD.
FOSHAN SONG HUEI ELECTRIC CO., LTD.

MODEL: RBP17-1-2-4(F)/PH/0496

Approval



Checked



Drawn



UNIT

mm

SCALE

1.5:1

VERSION

1.2

DATE

2012.10.09

DRAWING NO.

RS17-010



ISSUE

轴套外观变更

何鸿根

2023.06.29

整理图元

何鸿根

2019.01.07

SUBJECT

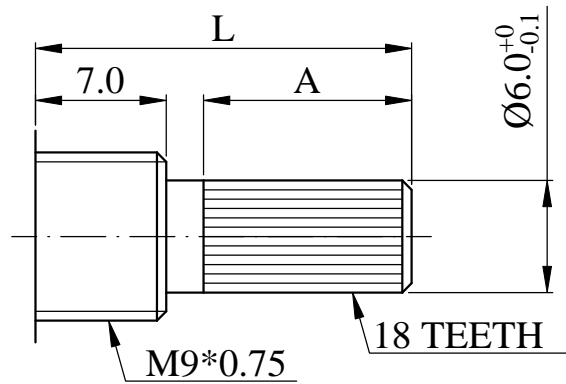
NAME

DATE

RECORD

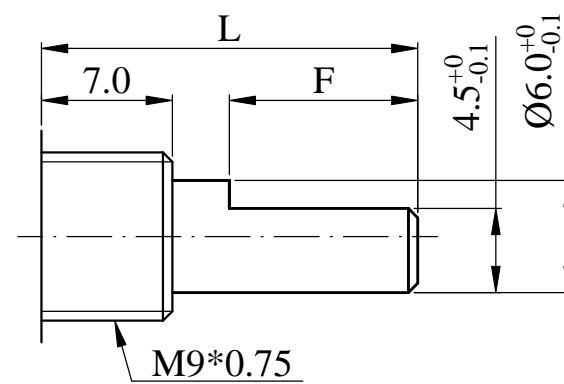
Shaft Types 軸型:

KC Type:



L=	15	20	25
A=	7	12	12

F Type:



L=	15	20	25
F=	7	12	12