



®

松暉電機工業股份有限公司

SONG HUEI ELECTRIC CO., LTD.

佛山市松暉電機科技有限公司

ISO 9001 國際品質認證
ISO 9001 CERTIFICATE

FOSHAN SONG HUEI ELECTRIC CO., LTD.

| 一般事項 General | | | | | | | | |
|--|--|---|---|-----------------------|---|-----------------------------------|--|--|
| 項目 Item | 測試條件 Test Conditions | 規格 Performance | | | | | | |
| 使用溫度範圍 Operating temperature | -10 °C ~ +70 °C | | | | | | | |
| 標準測試環境為溫度 5 ~ 35 °C 及濕度 45 ~ 85 % RH。 Standard test conditions shall be 5 ~ 35 °C in temperature and 45 ~ 85 % RH in humidity. | | | | | | | | |
| 如有判定上的疑慮，測試應該 20 ± 2 °C 及 65 ± 5 % RH 環境下進行。 Should any doubt arise in judgment test shall be conducted at 20 ± 2 °C and 65 ± 5 % RH. | | | | | | | | |
| 電氣特性 Electrical Characteristics | | | | | | | | |
| 項目 Item | 測試條件 Test Conditions | 規格 Performance | | | | | | |
| 定格電力 Rating | 開關所能承受的最大的電壓和電流。 The switch can take maximum voltage and current. | AC 125 V 0.3 A | | | | | | |
| 接觸電阻 Contact resistance | 使用 1 KHz ± 200 Hz (最大 20 mV, 50 mA) 或 DC 5 V 1 A 壓降法測試。 Shall be measured at 1 KHz ± 200 Hz (Max 20 mV, Max 50 Ma) or DC 5 V 1 A voltage drop method. | Less than 50 mΩ 小於 50 mΩ | | | | | | |
| 絕緣阻抗 Insulation resistance | 施加 500 V 之直流電壓，測試 1 分鐘。測試位置：端子和軸心間。 Shall be measured by applying DC 500 V, between all terminals and between the terminal and the frame for 1 minute ± 5 sec. | More than 100 MΩ 大於 100 MΩ | | | | | | |
| 耐電壓 Withstand voltage | 施加 500 V 之交流電壓，測試 1 分鐘。 測試位置：端子和外殼、端子和軸心間。 Applying AC 500 V measure for 1 minute. Applied position: between terminal and frame between terminal and shaft . | 不可有損傷、電弧、絕緣破壞 Without damage to parts arcing or breakdown. | | | | | | |
| 接觸形態 Contct type | / | 先斷開後接觸 Non - shorting | | | | | | |
| 機械特性 Mechanical Characteristics | | | | | | | | |
| 項目 Item | 測試條件 Test Conditions | 規格 Performance | | | | | | |
| 作動力 Operating force | 旋轉速度：30 ° / 秒 操作位置：軸心前端 5 mm 處。 Rotation speed: 30 ° / sec. Operating position: 5 mm from shaft end. | 1.0 ± 0.5 kgf.cm | | | | | | |
| 止檔強度 Shaft stopper strength | 測試時間：旋轉至開關起始端和末尾端各 10 ± 1 秒。 Test duration: switch rotate to each end for 10 + / - 1 sec. | 5 Kgf.cm max 小於 5 Kgf.cm | | | | | | |
| 軸推拉強度 Push-pull strength of shaft | 測試時間：使用推力 10 秒後立即再使用拉力 20 秒。 測試點及方向：測試點為軸心頂部，方向為軸向。 Apply torsion force for bushing matching nut. Test duration: 10 sec. of push force immediately followed by 20 sec. of pull force should be applied. Test point and direction: the strength should be applied to the top end of the shaft in axial direction. | 8 Kgf.cm max 小於 8 Kgf.cm | | | | | | |
| 焊錫耐熱性 Soldering heat resistance | ※DIP焊錫條件：Condition of DIP soldering: 1.清潔焊錫處理時，請確保在下列條件下作業： 1 Soldering shall be certified with following condition. <table border="1" data-bbox="367 1859 1069 2116"> <tr> <td>預熱溫度 Preheat temperature</td> <td>(印刷基板之RV固定面溫度100 °C 以下，2 分鐘以內。 1.(Surface temperature of mounting side) 100 °C max within 2 min.</td> </tr> <tr> <td>焊錫溫度 sotemnerature</td> <td>Solder 260 °C ± 5 °C 5 秒以內。 260 °C ± 5 °C Within 5 sec</td> </tr> <tr> <td>手焊溫度 Manual solder temperature</td> <td>350 °C ± 5 °C 3 秒以內。 350 °C ± 5 °C Within 3 sec</td> </tr> </table> | 預熱溫度 Preheat temperature | (印刷基板之RV固定面溫度100 °C 以下，2 分鐘以內。 1.(Surface temperature of mounting side) 100 °C max within 2 min. | 焊錫溫度 sotemnerature | Solder 260 °C ± 5 °C 5 秒以內。 260 °C ± 5 °C Within 5 sec | 手焊溫度 Manual solder temperature | 350 °C ± 5 °C 3 秒以內。 350 °C ± 5 °C Within 3 sec | 端子不可有接觸不良或明顯鬆動。 Without excessive looseness of terminals and failure contact. |
| 預熱溫度 Preheat temperature | (印刷基板之RV固定面溫度100 °C 以下，2 分鐘以內。 1.(Surface temperature of mounting side) 100 °C max within 2 min. | | | | | | | |
| 焊錫溫度 sotemnerature | Solder 260 °C ± 5 °C 5 秒以內。 260 °C ± 5 °C Within 5 sec | | | | | | | |
| 手焊溫度 Manual solder temperature | 350 °C ± 5 °C 3 秒以內。 350 °C ± 5 °C Within 3 sec | | | | | | | |
| 2.以上工程 1 次通過即可。 2.Please use the above process only one time. | | | | | | | | |

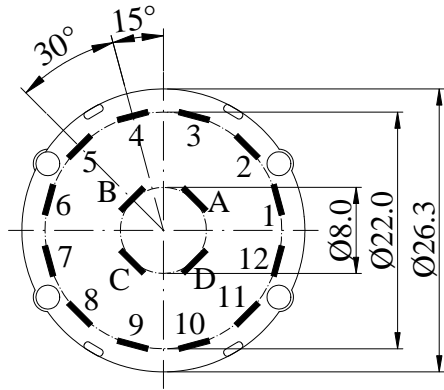


®

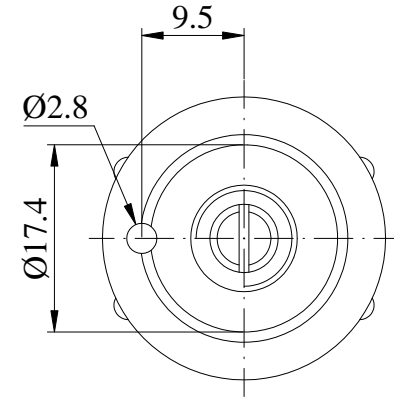
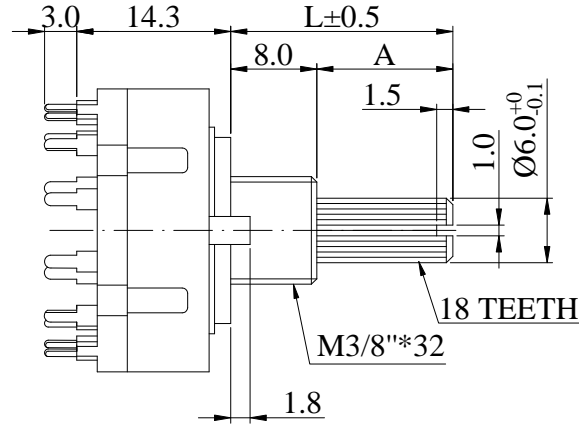
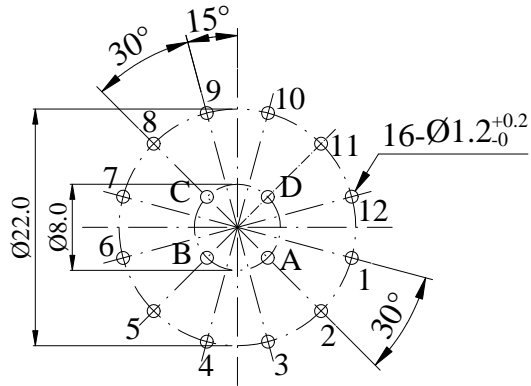
松暉電機工業股份有限公司
 SONG HUEI ELECTRIC CO., LTD.
 佛山市松暉電機科技有限公司
 FOSHAN SONG HUEI ELECTRIC CO., LTD.

ISO 9001 國際品質認證
 ISO 9001 CERTIFICATE

| 耐久特性 Durability | | |
|--|---|---|
| 項目 Item | 測試條件 Test Conditions | 規格 Performance |
| 操作壽命 (無負載) Operating life (Under no load) | 10,000 個週期，運行期間不間斷，運行速度每分鐘 9~12 次。 10,000 cycles of operating shall be performed continuously at a rate of 9~12 cycles per minute without load. After operating life test, shall be in accordance with the following specifications. | 接觸阻抗小於 200 mΩ。 絕緣電阻大於 50 MΩ。 耐電壓 AC 250 V 測試一分鐘 操作力不超出 +10%~-30% 初始力。 To contact resistance: Less than 200 mΩ. Insulation resistance: More than 50 MΩ. Withstand voltage: AC 250 V per 1 minute. Operating force: Less than +10%~-30% for initial operating force. |
| 操作壽命 (負載) Operating life (Under load) | 10,000 個週期，運行期間不間斷，運行速度每分鐘 9~12 次，使用 AC 125 V 0.3 A 的負載進行。 10,000 cycles of operating shall be performed continuously at a rate of 9~12 cycles per minute with resistive load of AC 125 V 0.3 A. After operating life test, shall be in accordance with the following specifications. | 接觸阻抗小於 500 mΩ。 絕緣電阻大於 50 MΩ。 耐電壓 AC 250 V 測試一分鐘 操作力不超出 +10%~-30% 初始力。 To contact resistance: Less than 500 mΩ. Insulation resistance: More than 50 MΩ. Withstand voltage: AC 250 V per 1 minute. Operating force: Less than +10%~-30% for initial operating force. |
| 耐候性 Weather Performance | | |
| 項目 Item | 測試條件 Test Conditions | 規格 Performance |
| 濕度測試 Humidity test | 使用溫度 40 ± 2 °C，濕度 90~95% RH 的測試條件 240 小時後，放置在常溫下一小時後進行測試。 Testing potentiometers been placed at 40 ± 2°C and 90~95%RH for 240 hours in anormal ambient condition for an hour. Then to be measured within an hour. | 通過以上的測試，該產品能達到以下要求： 絕緣測試：DC 500 V 電壓。 不小於 50 MΩ。 |
| 高溫測試 Heat test | 使用溫度 70 ± 2 °C 的測試條件 16 小時後，放置在常溫下一小時後進行測試。 Testing potentiometers been placed at 70 ± 2°C in temperature for 16 hours in anormal ambient condition for an hour. Then to be measured within an hour. | 耐電壓測試：使用 AC 250 V 電壓，測試一分鐘，不可有損傷、電弧、絕緣破壞，其他規格要求變化小於 ± 20%。 Through the above tests, the product can achieve insulation resistance : More than 50 MΩ at 500 V DC. |
| 低溫特性 Cold test | 使用溫度 -10 ± 2 °C 的測試條件 16 小時後，放置在常溫下一小時後進行測試。 Testing potentiometers been placed at -10 ± 2°C in temperature for 16 hours in anormal ambient condition for an hour. Then to be measured within an hour. | Withstand voltage: for 1 minute or more at 250 V AC, without damage to parts arcing or breakdown. Other requirements change less than ± 20%. |

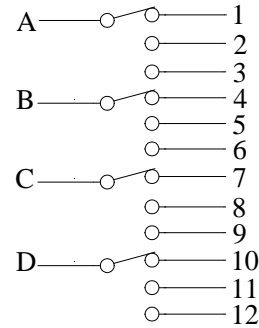


Mounting Hole



SHAFT SHOW IN FULL C.C.W POSITION

CIRCUIT



Non notation tolerance

| | | | | | | |
|--------|----|----|--|--|----------|------|
| L= | 15 | 20 | | | < 10 | ±0.3 |
| A= | 7 | 12 | | | 10 ~ 100 | ±0.5 |
| choose | | | | | > 100 | ±0.8 |



SONG HUEI ELECTRIC CO., LTD.
FOSHAN SONG HUEI ELECTRIC CO., LTD.

MODEL: RBP26-1-4-3(KC)/PH/0081

Approval



Checked



Projected



| | | | |
|-------------|----------|-------|------------|
| UNIT | mm | SCALE | 1.5:1 |
| VERSION | 1.1 | DATE | 2010.10.29 |
| DRAWING NO. | RS26-004 | | |

| | | | |
|--------|---------|------|------------|
| ④ | | | |
| ③ | | | |
| ② | | | |
| ① | 整理图元 | 何鸿根 | 2019.01.09 |
| ISSUE | SUBJECT | NAME | DATE |
| RECORD | | | |

Shaft Types 軸型:

| KC/PH type | | | | | F/PH type | | | | | F/LAL type | | | | | RE/LAL type | | | | |
|------------|----|----|--|--|-----------|----|----|--|--|------------|----|----|----|----|-------------|----|----|----|----|
| | | | | | | | | | | | | | | | | | | | |
| L | 15 | 20 | | | L | 15 | 20 | | | L | 15 | 20 | 25 | 30 | L | 15 | 20 | 25 | 30 |
| A | 7 | 12 | | | F | 7 | 12 | | | F | 7 | 12 | 12 | 12 | | | | | |