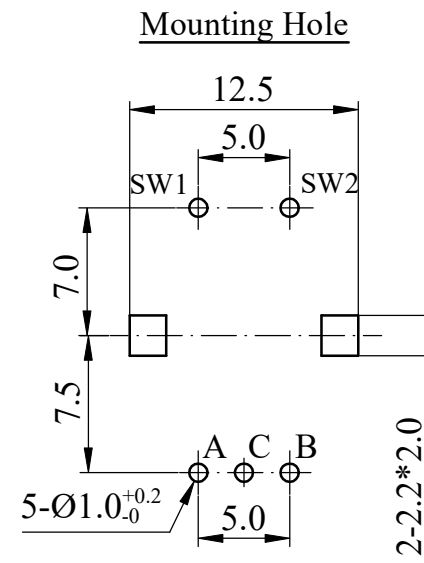
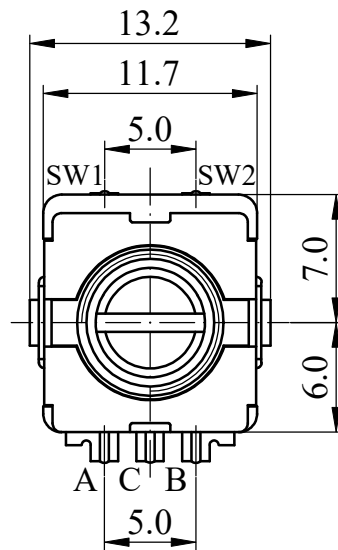
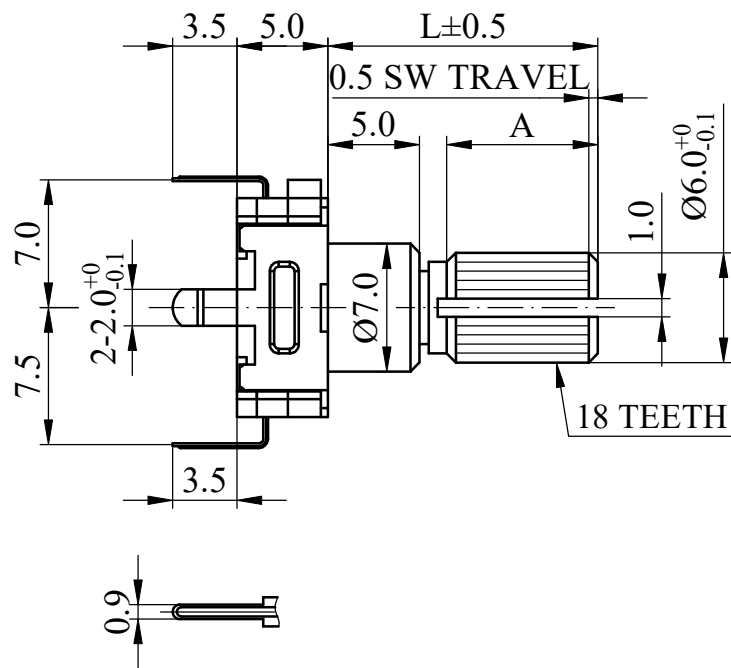




ISO 9001 國際品質認證
ISO 9001 CERTIFICATE

松暉電機工業股份有限公司
SONG HUEI ELECTRIC CO., LTD.
佛山市松暉電機科技有限公司
FOSHAN SONG HUEI ELECTRIC CO., LTD.

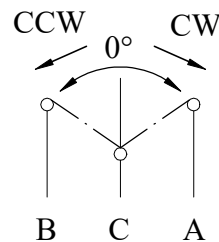
一般事項 General	
使用溫度範圍 Operating temperature	-30 °C ~ 80 °C
儲存溫度 Storage temperature	-40 °C ~ 85 °C
電氣特性 Electrical Characteristics	
額定功率 Power rating	DC 5 V 10 mA
接觸電阻 Contact resistance	Less than 100 mΩ
絕緣阻抗 Insulation resistance	100 MΩ at DC 250 V
耐電壓 Withstand voltage	For 1 minute or more (at AC 300 V)
機械特性 Mechanical Characteristics	
全回轉角度 Total rotational angle	90 ° ± 5 °
全回力矩 Rotational torque	30 ~ 200 gf.cm
軸推拉力矩 Shaft push-pull strength	8 Kgf max
止檔強度 Shaft stop strength	3 Kgf.cm max
軸向間隙 Shaft play in axial direction	0.4 mm max
軸擺動 Shaft wobble	0.7 * L / 30 mm p-p 以下 (L: 指安裝平面到軸的柄端的距離) 0.7 * L / 30 mm p-p Max L: Distance between mounting surface and the top of the shaft.
軸的回轉方向擺動 Shaft play in rotational wobble	5° 以下 5° Max
回轉壽命 Rotational life	15,000 cycles at a speed of 600 cycles / per hour 每小時 600 圈的速度測試
焊錫耐熱性 Resistance to soldering heat	手焊: 300 °C 以下, 3 秒以內. 自動或半自動機台焊錫條件: 預熱: 基板表面溫度 100 °C 以下, 時間 1 分以內, 過錫爐: 230 ± 5 °C 3 ~ 5 秒 Manual soldering: less than 300 °C and within 3 seconds. For automated or semi-automated soldering equipments: Preheating: surface temperature of board: less than 100 °C and within 1 min. Auto soldering: 260 ± 5 °C for 3 ~ 5 seconds.
推動開關規格 Push-on Switch Specific Ations	
開關電路 Switch circuit	Single pole and single throw (push on) 單極單投 (推動)
開關工作行程 Switch travel (mm)	0.5±0.3 ^{mm}
開關作動力 Switch operating force	500 ⁺²⁰⁰ ₋₂₀₀ gf.cm
開關額定功率 Switch rating power	DC 5 V 10 mA
開關接觸阻抗 Switch contact resistance	第一個週期: 100 mΩ, 在有效的壽命範圍結束後 200 mΩ。 First period 100 mΩ ; 200 mΩ after the end of useful life is reached
開關按壓壽命 Switch push life	20,000 cycles (500 cycles / H, shaft push load 1 kgf max ; 按壓力 1 kg 以下, 500 次 / H)
Note 注明: 當產品無帶開關結構時, 以上推動開關規格整項取消 Note: When product without switch structure, the above switch specifications are cancelled.	



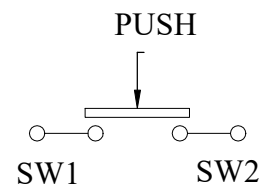
CW ← → CCW
CODE TALE()ON

Angle	45°	23°	0°	23°	45°
Terminal					
A					
C					
B					

CIRCUIT



SWITCH



Non notation tolerance

L=	15	20	25		< 10	±0.3
A=	7	10	12		10 ~ 100	±0.5
choose					> 100	±0.8



SONG HUEI ELECTRIC CO., LTD.
FOSHAN SONG HUEI ELECTRIC CO., LTD.

MODEL: RS1116S(KC)/LAL/0496

Approval



Checked



Drawn



UNIT

mm

SCALE

2:1

VERSION

1.0

DATE

2023.03.10

DRAWING NO.

ED-125



ISSUE

SUBJECT

NAME

DATE

RECORD